

Grey Shrike-thrush

(*Colluricincla harmonica*)

One of the area's most distinctive and melodious songbirds. Plumage is muted grey tones.



Brown Thornbill

(*Acanthiza pusilla*)

A small insect-eating bird seen on the forest floor. Dullish brown in colour.



Tawny

Frogmouth

(*Podargus strigoides*)

Not an owl but a native frogmouth. Commonly mistaken for a broken branch. Very hard to spot.

Birds of Walhalla and Environs

Very Common



Pied Currawong

(*Strepera graculina*)

A medium sized opportunistic bird that is closely related to the magpie. An extremely vocal bird.



Grey Fantail

(*Rhipidura albiscapa*)

A small insectivorous local bird that frequents the open bushland around the town. Sometimes seen in gardens.

Crimson

Rosella

(*Platycercus elegans*)

A local parrot that is attracted by seed feeding. Common in area.



New Holland Honeyeater

(*Phylidonyris novaehollandiae*)

A small, largely black and white bird with yellow plumage on the wings.



King Parrot

(*Alisterus scapularis*)

A local parrot attracted by seed feeding. The male is shown here. The female is mostly green in colour.



Superb Lyre Bird

(*Menura superba*)

Very common in the town fringes. A great mimic, that feeds on insects. Seen on roadsides.



This guide was compiled for visiting bird watchers by the Walhalla Heritage and Development League Inc. It is not intended to be an exhaustive guide but an introduction to our many local feathered friends! Please forward comments to the below address.

Walhalla Heritage & Development League

c/o Post Office, Walhalla 3825

Phone: 5165-6250

www.walhalla.org.au

Brochure compiled by Brian Brewer 2015



Powerful Owl

(*Ninox strenua*)

A large local owl that is hard to find in daylight. At night its distinctive "double hoot" (who - hoo) call is very distinctive.

Satin Bowerbird

(*Ptilonorhynchus violaceus*)

Males are a stunning blue and females mottled green and brown. These are commonly seen in gardens and parks in town.



Harder to find birds

Wonga Pigeon

(*Leucosarcia melanoleuca*)

Large native pigeon found in surrounding forest and on bush tracks around town.



Sulphur-crested Cockatoo

(*Cacatua galerita*)

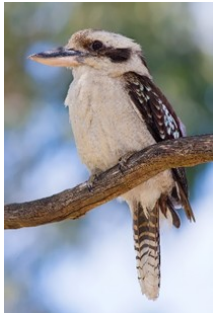
"Cockies" are regular visitors to the town. Sometimes they can be heard but not seen.



Kookaburra

(*Dacelo novaeguineae*)

Another local bird that is more often heard than seen. Very distinctive "laughing" call at dawn and dusk.



Glossy Black Cockatoo

(*Calyptorhynchus lathamii*)

Large birds. Males are black with red tail feathers. Females are lighter in colour. A sign of rain when they enter the valley!



Superb Fairy Wren

(*Malurus cyaneus*)

Small birds. Male has bright blue head and the female plain grey and brown. Insect eaters that weave tiny suspended nests, quite often near or over water.



Welcome Swallow

(*Hirundo neoxena*)

Migratory bird that is seen in the warmer months soaring above the valley catching insects.



Australian Magpie

(*Coracias hypoleuca*)

Common around towns, the magpie is a medium sized bird also seen in small numbers in Walhalla.



Wedge-tailed

Eagle

(*Aquila audax*)

Large bird of prey sometimes seen soaring over the valley.



Spotted Dove

(*Spilopelia chinensis*)

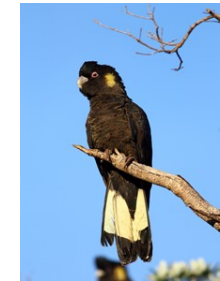
Smaller long-tailed introduced pigeon sometimes found foraging for seeds and fruit etc. on the forest floor.



Yellow-tailed Black Cockatoo

(*Calyptorhynchus funereus*)

A large cockatoo, the male having yellow tail feathers.



Brown Goshawk

(*Accipiter fasciatus*)

A medium sized bird of prey frequenting the open forests around the town. They feed on smaller birds and mammals.

